



ARMAAN PUJANI

PRODUCTION DESIGN PORTFOLIO

apujani@afi.edu
armaan-pujani.com
+1 323 376 8688

PRODUCTION PORTFOLIO

- 01 MOTHER SUPERIOR
- 02 I AM JAYA
- 03 NOTHING SHORT OF A PICNIC DATE
- 04 MISCELLANEOUS

DRAFTING

- 05 HAND DRAFTING
- 06 DIGITAL DRAFTING
- 07 VECTORWORKS
- 08 RHINO 7
- 09 LOCATION SURVEY

ILLUSTRATIONS

- 10 HUGO REDESIGN
- 11 VARIOUS ILLUSTRATIONS
- 12 HAND SKETCHING

SCRIPT TO SCREEN

- 13 NYPD BLUE PILOT EPISODE
- 15 MIS-ALIGNMENT - AFI THESIS
- 17 REPLIQUE - AFI SHORT

MODEL AND PROP MAKING



PRODUCTION DESIGN OF A TIMELESS WORLD

- PROP MAKING, MINIATURE MODELING
- SET BUILD AND LOCATIONS
- WORLD BUILDING



REFERENCE



FILM STILL



REFERENCE



Bless us Father.

FILM STILL



REFERENCE



Let's go!

FILM STILL



Don't be afraid.

FILM STILL



FILM STILL



FILM STILL

PITCH DECK



Hallways



Bedrooms



Wine Cellar



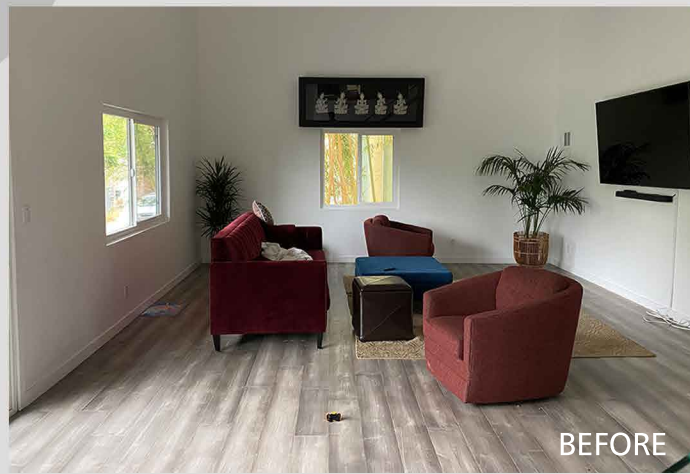
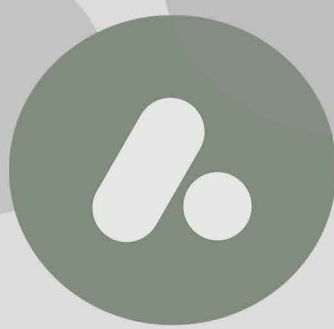
Sister Margaret



Mother Superior

MOTHER SUPERIOR

PRODUCTION DESIGN - SHORT



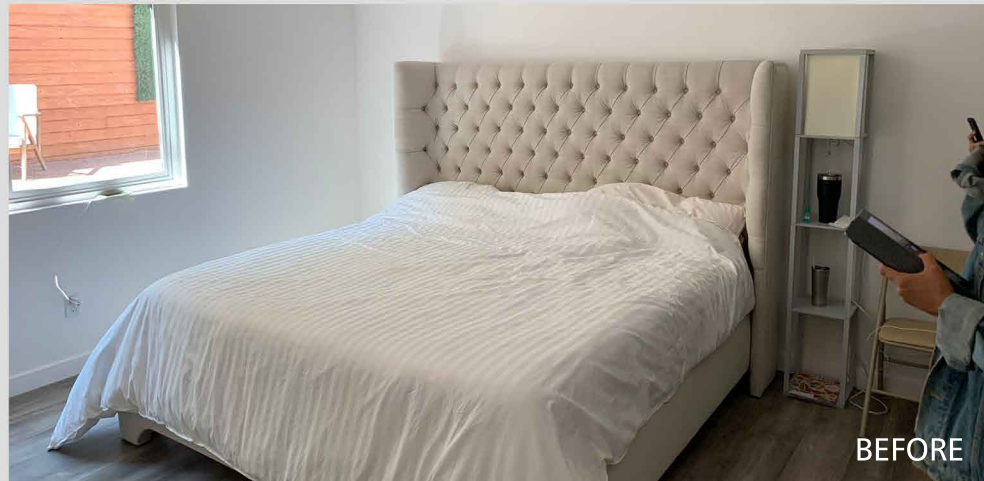
BEFORE



PRE-VIS



FILM STILL



BEFORE



PRE-VIS



FILM STILL



FILM STILL



BTS



BTS



FILM STILL

Scene Number	Set Name/Scene Description	Location	Shoot Date	Graphics	Props	Construction	Set Dec	Notes
1	Audiologist Office/ Day Zoom out on Jaya between the Dr. Gupta and Chetu.	Soundstage	11/22/2021	Medical Book Covers, Report for Doctor, Doctor Certificate, Ear Diagram	Prescription pad, Pen, Test Reports, Bag for Chetu,	Audiologist Office Set	Desk, Chairs, Doctors Certificates, Medical Books, Pad, Pen, Laptop, Checkup Machine, Headphones, Side chair, Side table, report files, ear model, ear diagrams in frames, plants, Clock on Wall	Colour palette Mint Green, Wood and White
2	Hallway of Audiologist Office/ Day Assitant shuts the door	Soundstage	11/22/2021		Files for nurse	Outside of the office	Doctors name board, Chairs for waiting, Frame with ear diagram, Plant,	
3	Int. Family Dining Room / Evening Chetu and Ami try discussing with Jaya about the doctor's appointment.	Location	11/20/2021	Pictures for frame, Mothers Picture	Food, plates and silverware, serving bowls	Fix the curtain rods	Dining table, 4 chairs, table mats, carpet, reading chair, floor lamp, ottoman seat, piano, paintings, crockery table, table lamp, curtains, curtain rods,	
4	Int. Jaya's Bedroom/ Evening Jaya having a meltdown about her hearing difficulty.	Location	11/20/2021	Pictures of Sapna and Jaya, Both sisters, Mother alone	mehendi outfit, 'the art of sign language' book, clock (breaking), box labelled 'Sapna' chunni, kathak bells, kids memory stuff, mothers pictures, broken hearing aid,	Cover the mirrors, put curtains,	queen size bed + mattress+ bedsheets + comforter, nightstands, study table with chair and props, dresser with a lamp, carpet, curtains, frames, tabla, guitar, ganesh idol,	
5	Int. Sangeet - Living Room / Evening Chetu introduces Jaya to Raju, Jaya is disturbed.	Location	11/21/2021		Tea table setup - Tea cups, Kettle, Sweets decor, hearing aid batteries,	Fix the Curtains, Chandelier	loveseat, carpet, puffs x 3, throw pillows large x 5, plates with mehendi decorated, tea table setup, flower setups x 4, dresser, smallside table, curtains,	
6	Int. Sangeet - Living Room / Evening Jaya roams around looking for some privacy.	Location	11/21/2021					
7	Int. Jaya's Bedroom/ Evening Ami finds Jaya to say a few words.	Location	11/20/2021		Hearing Aid New One		Same Bedroom Setup, Different day	
8	Int. Living Room/Night Ami and Fiance walk down as Jaya faces another hearing issue through her hearing aid.	Location	11/21/2021		Glasses, phones,		Same living room setup! + staircase dressed up with lights and petals	
9	Int. Living Room/ Night Ami performs kathak for the audience as she remembers her mother.	Location	11/21/2021		Tabla		Same living room setup!	
10	Int. Dark Soundstage Jaya is in her space and performs.	Soundstage	11/22/2021		Flower petals		Lights, Curtains, Chandeliers, Some decor from Mehendi	
11	Int. Living Room/ Night Jaya comes centre stage and climax.	Location	11/21/2021		Table		Same living room setup!	



FILM STILL



FILM STILL

I AM JAYA
PRODUCTION DESIGN - SHORT



FILM STILL



FILM STILL



FILM STILL



FILM STILL



FILM STILL



FILM STILL



FILM STILL



FILM STILL



FILM STILL



FILM STILL



FILM STILL

NOTHING SHORT OF A PICNIC DATE

PRODUCTION DESIGN- SHORT

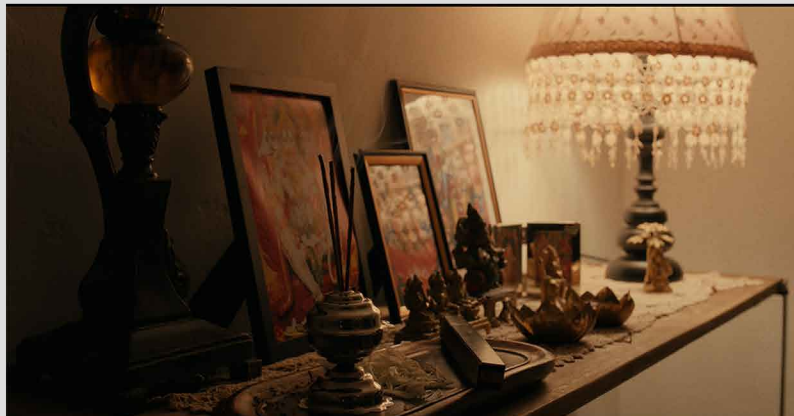
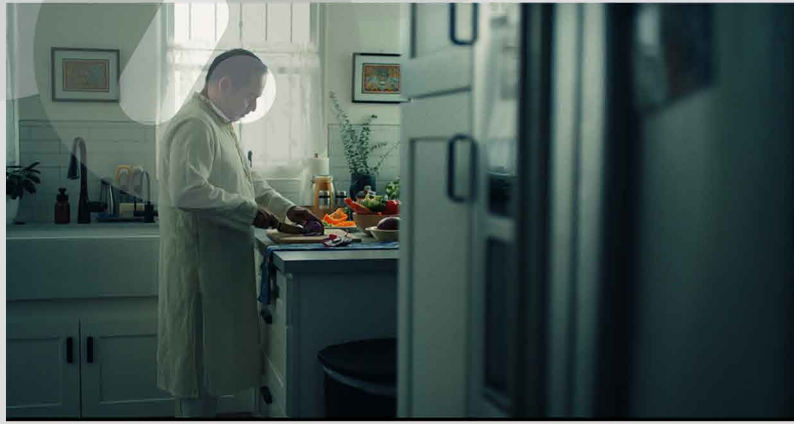
THE IDEA BEHIND THE DESIGN OF THE FILM WAS THAT WE HAD A LOCATION IN THE PARK AND THE BLACK VOIDS/ HER MIND WERE SETS BUILT ON A SOUND STAGE. 11 SETUPS ON STAGE.

SALTWATER

JEROME

HOTSODA

FAMILY FRENZY



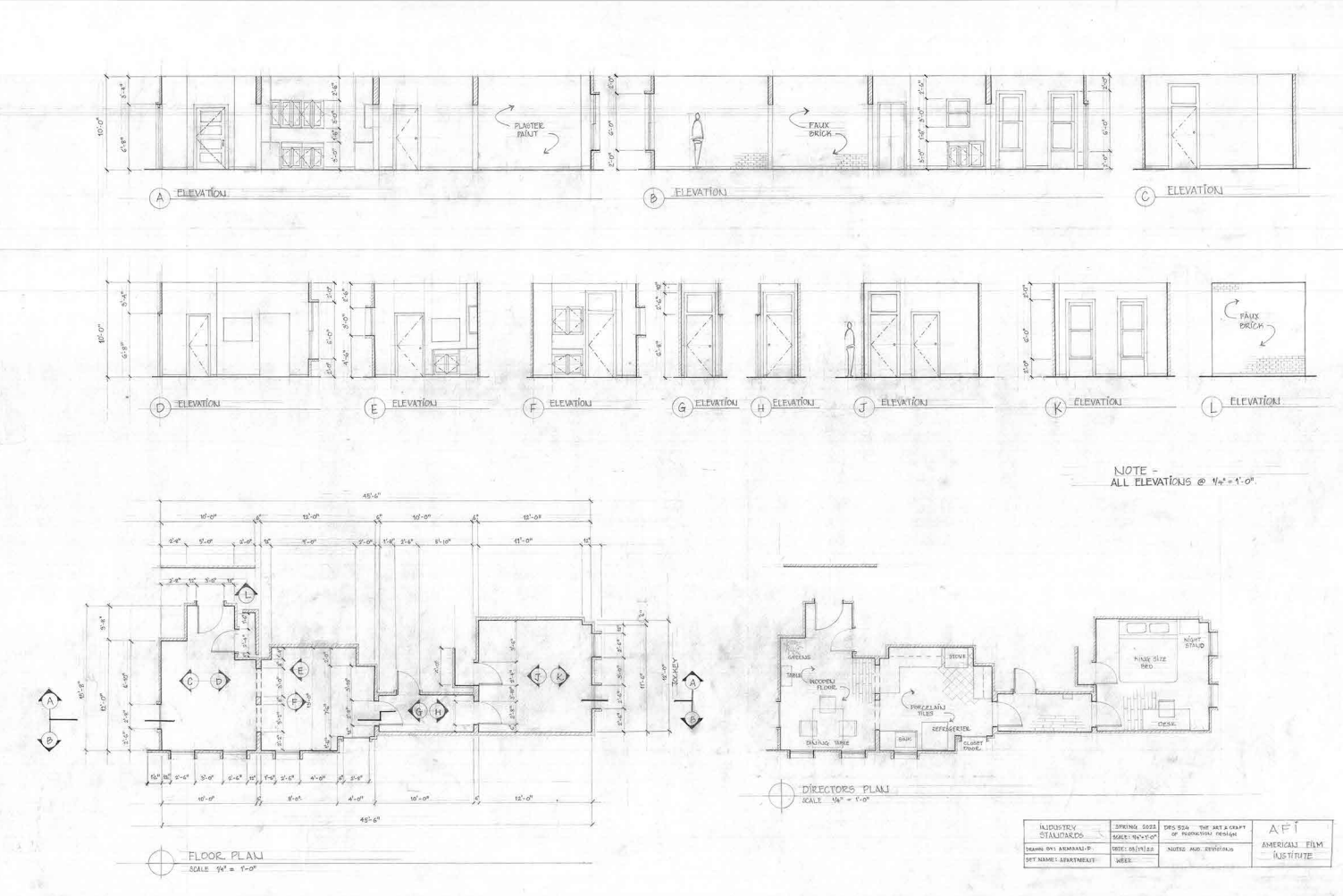
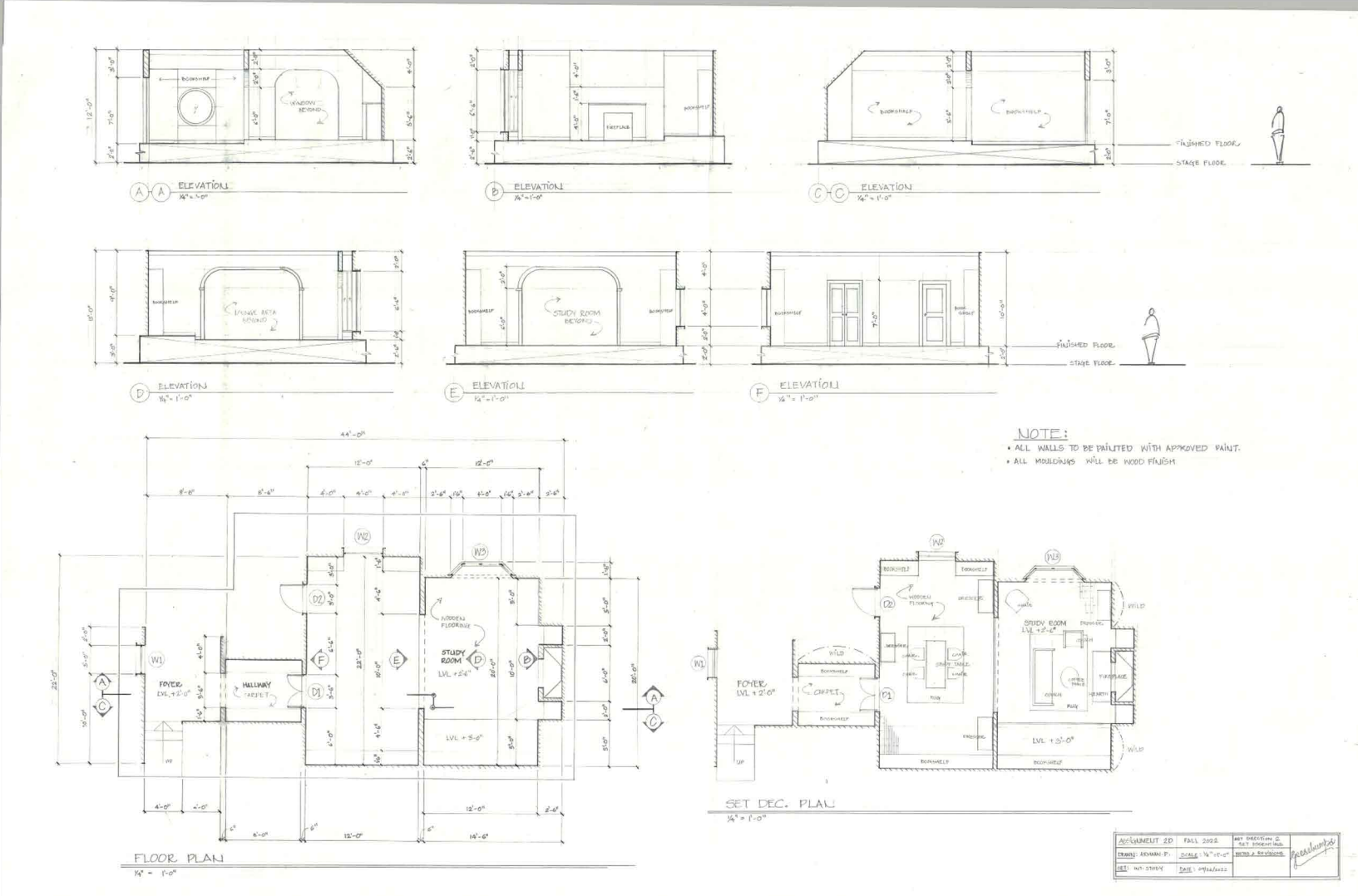
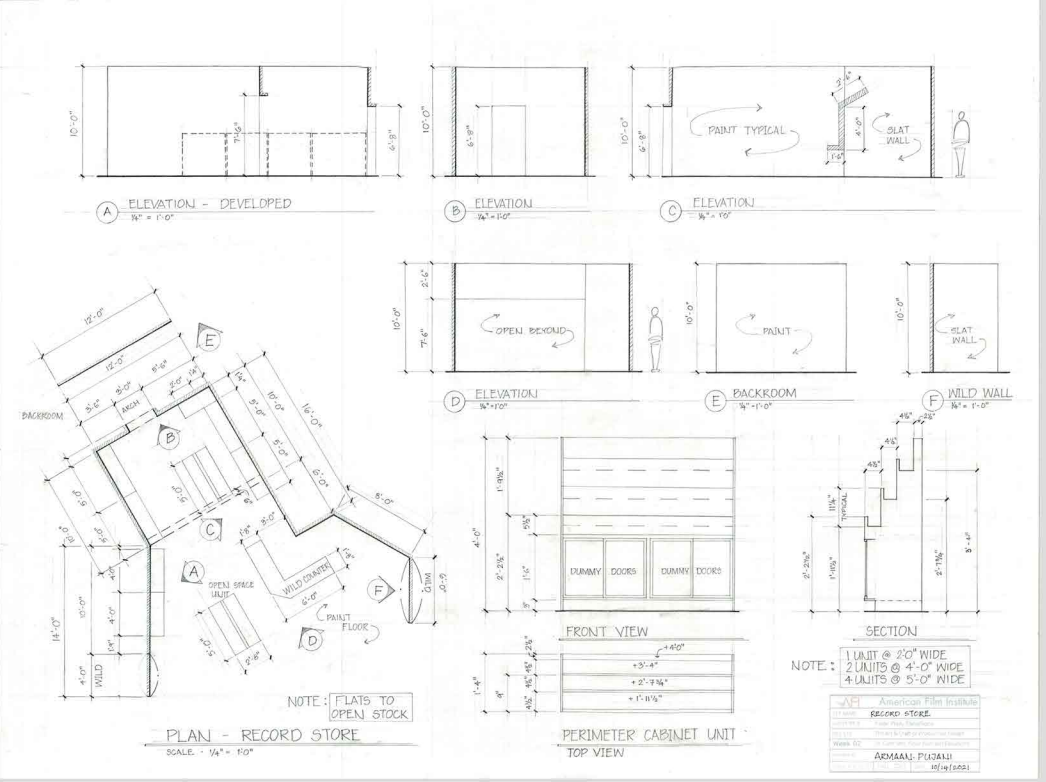
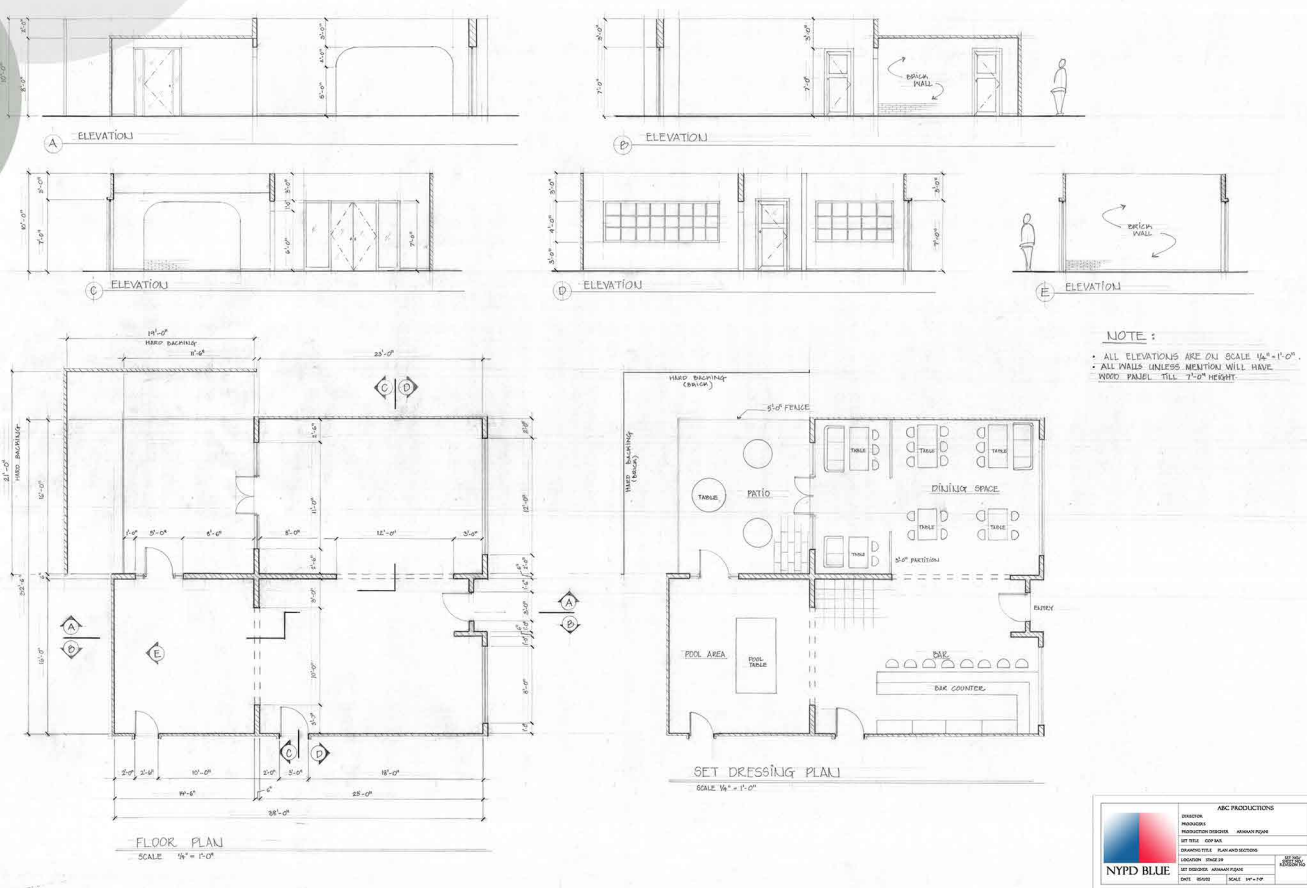
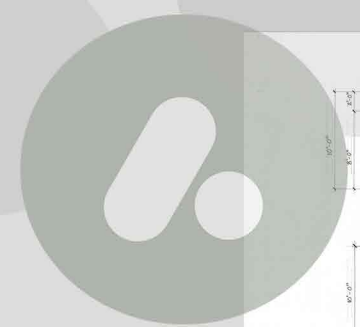
- WISCONSIN FILM FESTIVAL

- PAN AFRICAN FILM FESTIVAL

- DALLAS INTERNATIONAL FILM FESTIVAL

MISCELLANEOUS

PRODUCTION DESIGN - SHORT



HAND DRAFTING

ELEVATION
SCALE 3/4"=1'-0"

SECTION A
SCALE 3/4"=1'-0"

PLAN THRU SINGLE LITE
SCALE 3/4"=1'-0"

PLAN THRU DOOR PANEL
SCALE 3/4"=1'-0"

8A FULL SIZE SECTION

8B FULL SIZE SECTION

DETAIL 8 - TYPICAL DOOR

Labels: P155 CASING, JAMB, P49 DOOR STOP, TOP RAIL, P272 PANEL MOULD, GLASS, P298 SASH MUNTIN, STUDY ROOM SIDE, PLINTH, RAISED PANEL RP4, SIDE RAIL.

ASSIGNMENT 8A	SPRING 2023	DOOR DETAIL
DRAWN BY ARMAAN . P.	SCALE AS MENTIONED	NOTES AND REVISIONS
SET NAME INT. STUDY	DATE 01/24/2023	GOOSEBUMPS

8A FULL SIZE SECTION

WALL ELEVATION
SCALE 3/4"=1'-0"

SECTION B
SCALE 3/4"=1'-0"

8B FULL SIZE SECTION

Labels: BOOKSHELF, PLASTER PAINT, PLATFORM, STAGE FLOOR, 10' 0" MIN. CLEARANCE.

ASSIGNMENT 5A	FALL 2022	WALL DETAIL
DRAWN BY ARMAAN . P.	SCALE AS MENTIONED	NOTES AND REVISIONS
SET NAME INT. STUDY	DATE 11/01/2022	GOOSEBUMPS

EXTERIOR SILL

INTERIOR SILL

WALL ELEVATION
SCALE 3/4"=1'-0"

SECTION B
SCALE 3/4"=1'-0"

8A FULL SIZE SECTION

8B FULL SIZE SECTION

DETAIL 7 - WINDOW DETAIL

Labels: SASH B, SIDE WINDOW SASH, POST, MUNTIN, P294, BOTTOM WINDOW SASH, SILL, APRON, P54, WINDOW PUTTY, GLASS, WINDOW CASING, P161, EXTERIOR, INTERIOR, MATCH LINE.

ASSIGNMENT 7A	FALL 2022	WINDOW DETAIL
DRAWN BY ARMAAN . P.	SCALE AS MENTIONED	NOTES AND REVISIONS
SET NAME INT. STUDY	DATE 11/29/2022	GOOSEBUMPS

ELEVATION
SCALE 3/4"=1'-0"

SECTION B
SCALE 3/4"=1'-0"

SECTION C
SCALE 3/4"=1'-0"

SECTION D
SCALE 3/4"=1'-0"

PLAN
SCALE 3/4"=1'-0"

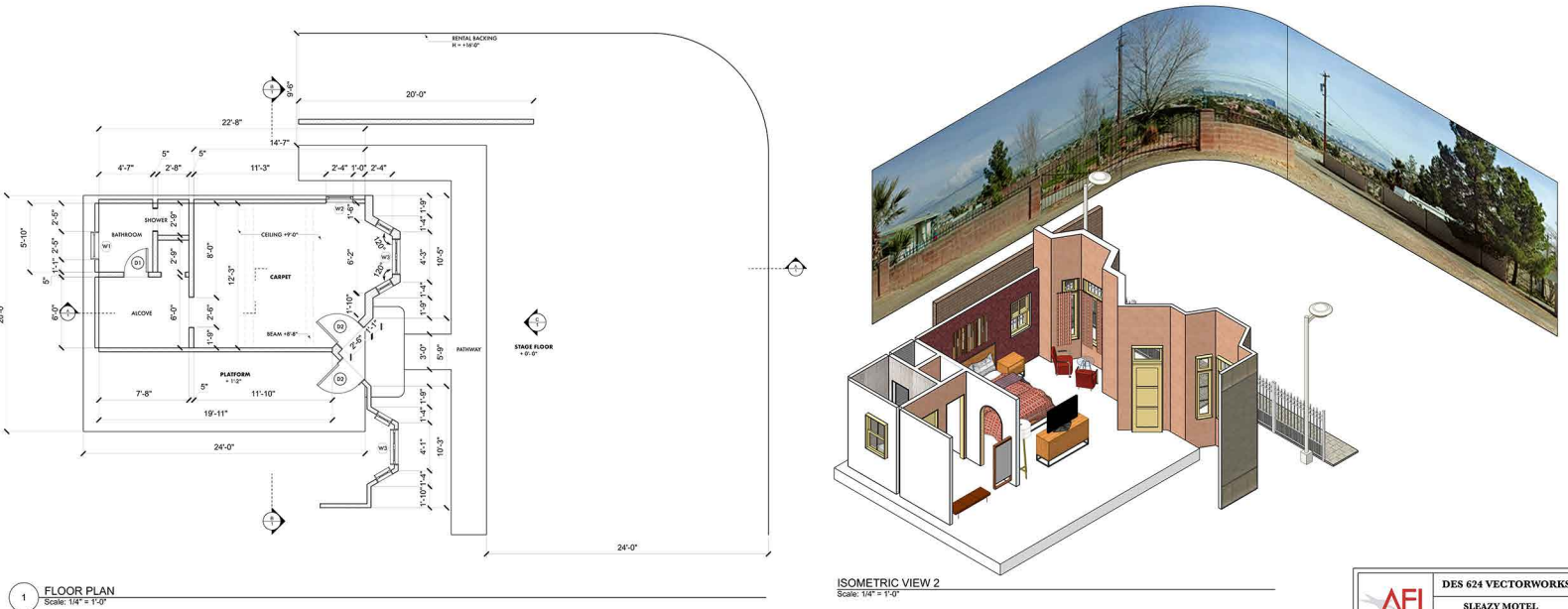
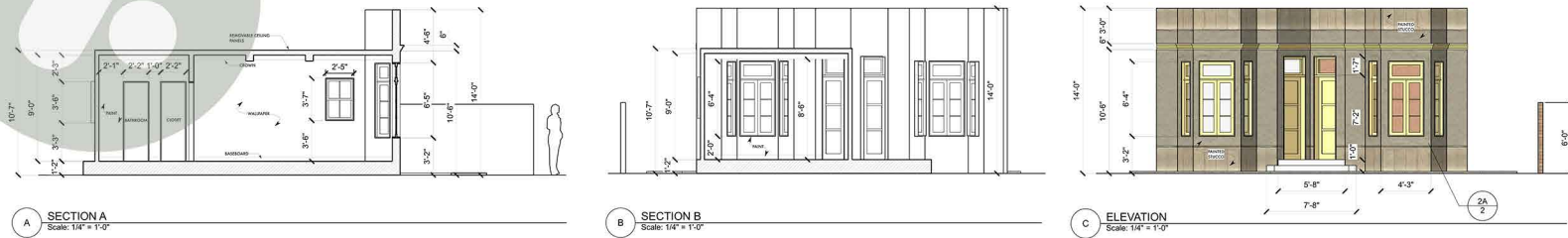
ISOMETRIC VIEW
SCALE 3/4"=1'-0"

9 FULL SIZE SECTION

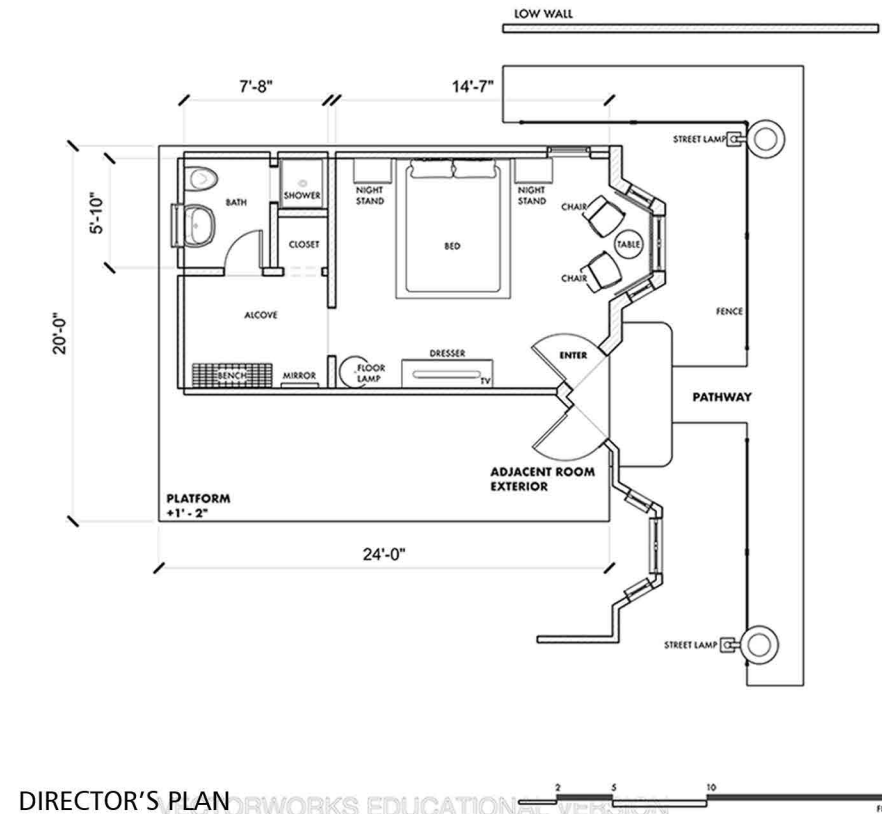
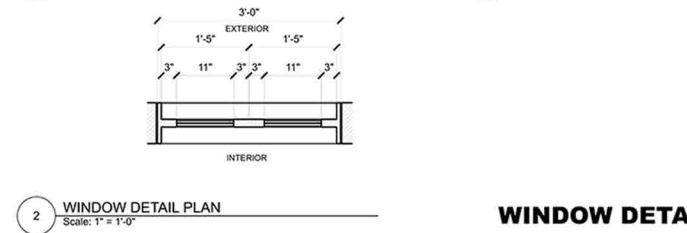
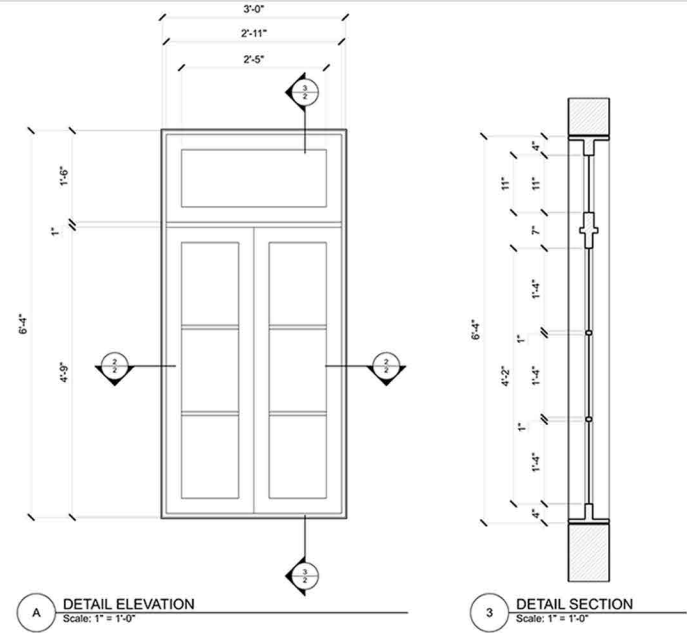
DETAIL 9 - FIREPLACE DETAIL

Labels: Moulding Center #901 Corbel, P247 Frieze Mould, GROVE.

ASSIGNMENT 9	SPRING 2023	FIREPLACE DETAIL
DRAWN BY ARMAAN . P.	SCALE AS MENTIONED	NOTES AND REVISIONS
SET NAME INT. STUDY	DATE 02/28/2023	GOOSEBUMPS



AFI DES 624 VECTORWORKS
SLEAZY MOTEL
PLAN AND ELEVATIONS
DESIGN BY ARMAAN PUJANI
DATE: 01/24/2023 SCALE: 1/4" = 1'



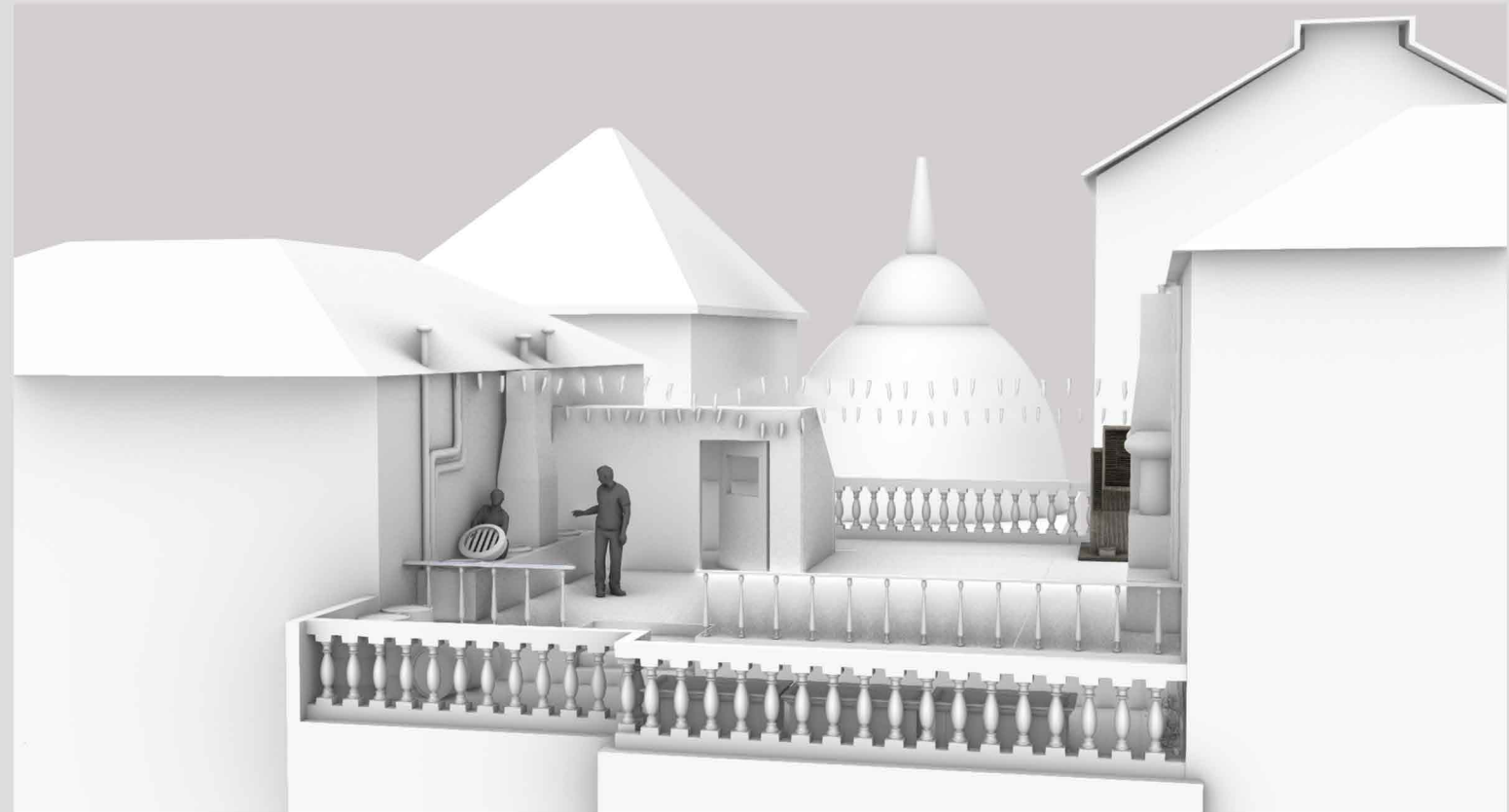
VECTORWORKS + TWINMOTION

PROMPT: THERE IS A SUPERHERO STYLE FIGHT GOING ON IN THE LIVING ROOM. THE FIGHT MOVES ONTO THE BALCONY, WHICH FALLS FROM WEIGHT.

PROMPT : TWO PEOPLE HAVING A CONVERSATION ON A ROOF TOP WITH THE CITY STRETCHING AROUND. ONE PERSON IS STICKING OUT OF THE CHIMNEY.



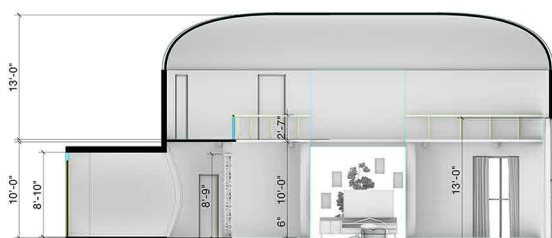
RHINO + TWINMOTION (WIP)



STORY BOARD



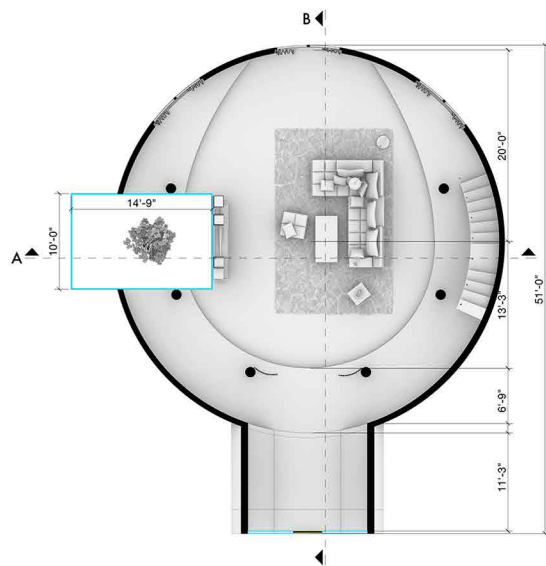
SECTION A
SCALE 1/4" = 1' - 0"



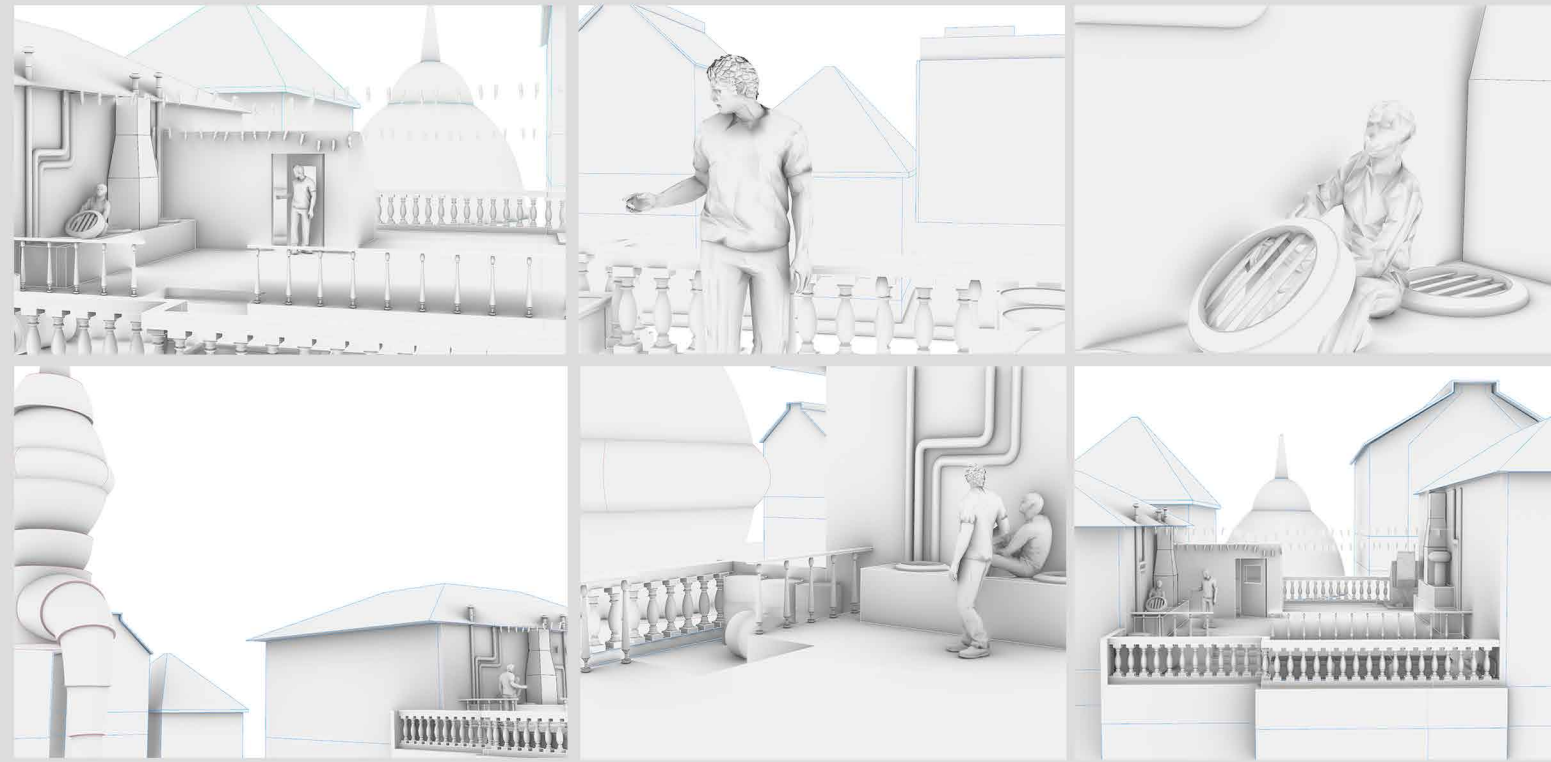
SECTION B
SCALE 1/4" = 1' - 0"



VIEWS



PLAN
SCALE 1/4" = 1' - 0"



RHINO MODELING



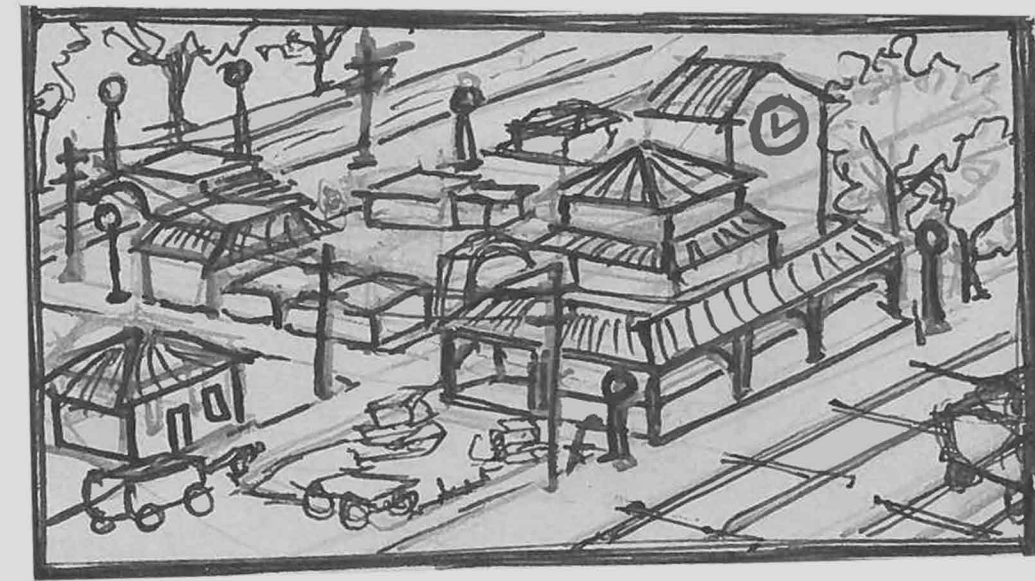
EXT. TOWN CENTER

HAND SKETCH + PROCREATE

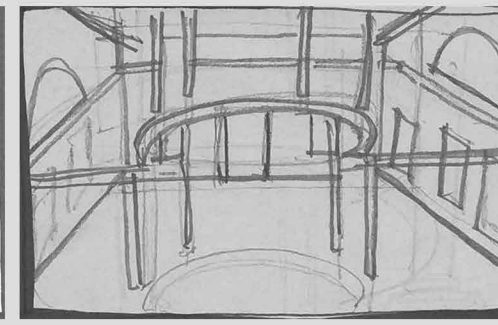
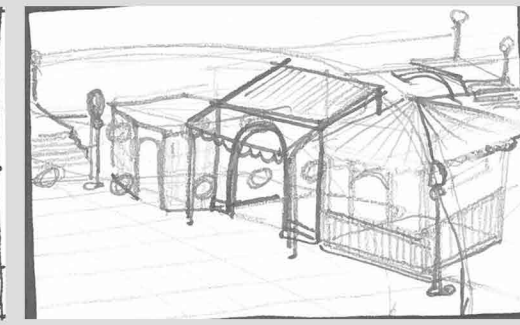
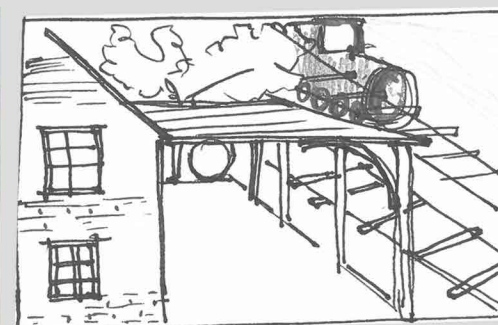


EXT. TOY STORE

HAND SKETCH + PROCREATE



HAND SKETCH + PROCREATE



HUGO - REDESIGN

HAND ILLUSTRATIONS



LIMBO (INT. NEW YORK APARTMENT)



LIMBO (INT. PENTHOUSE APARTMENT)



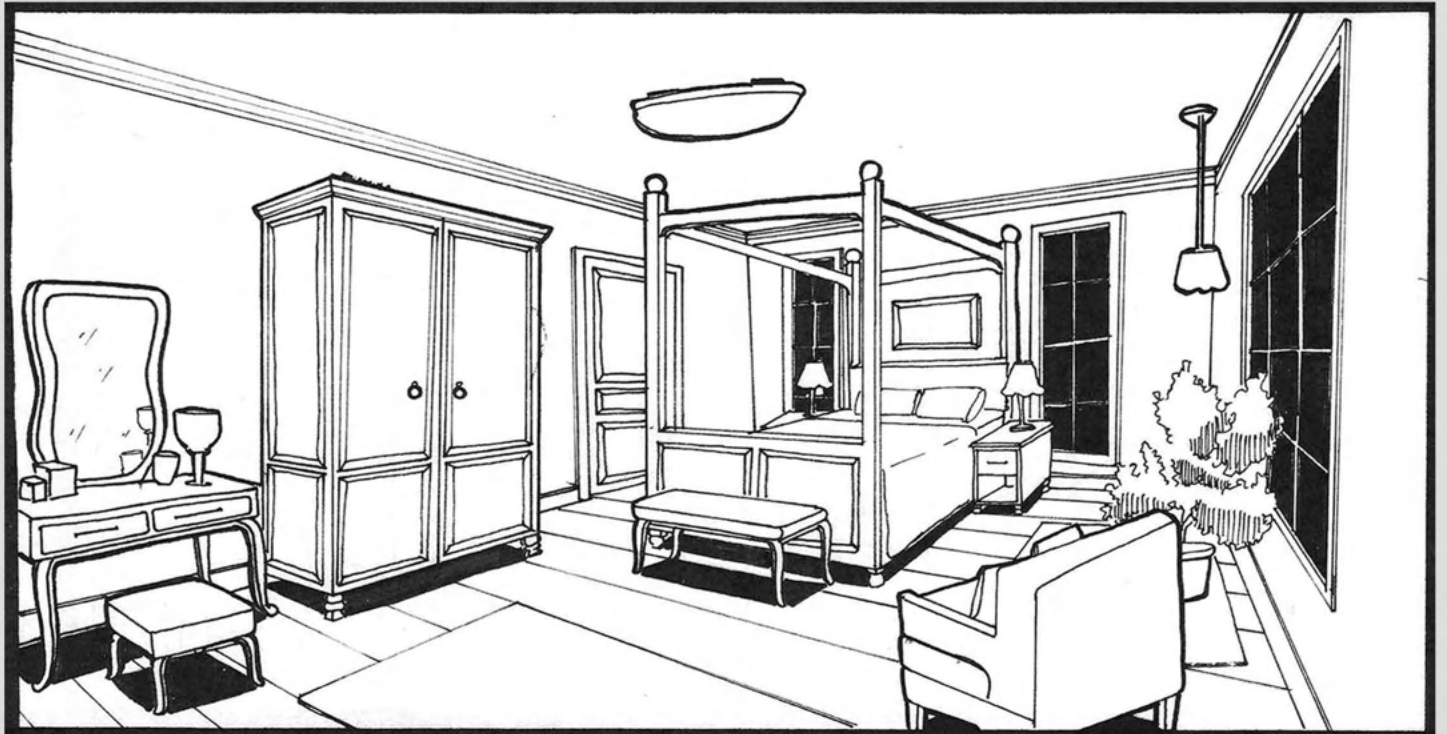
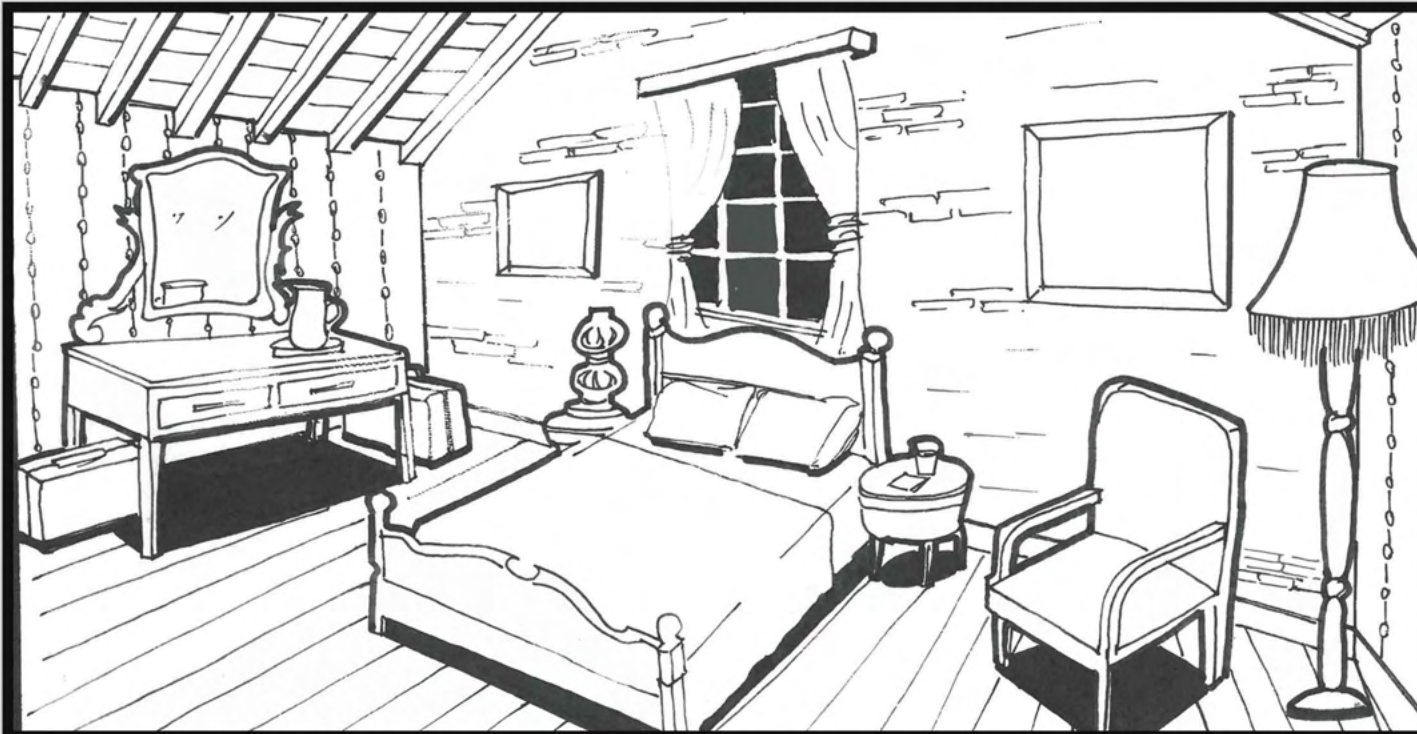
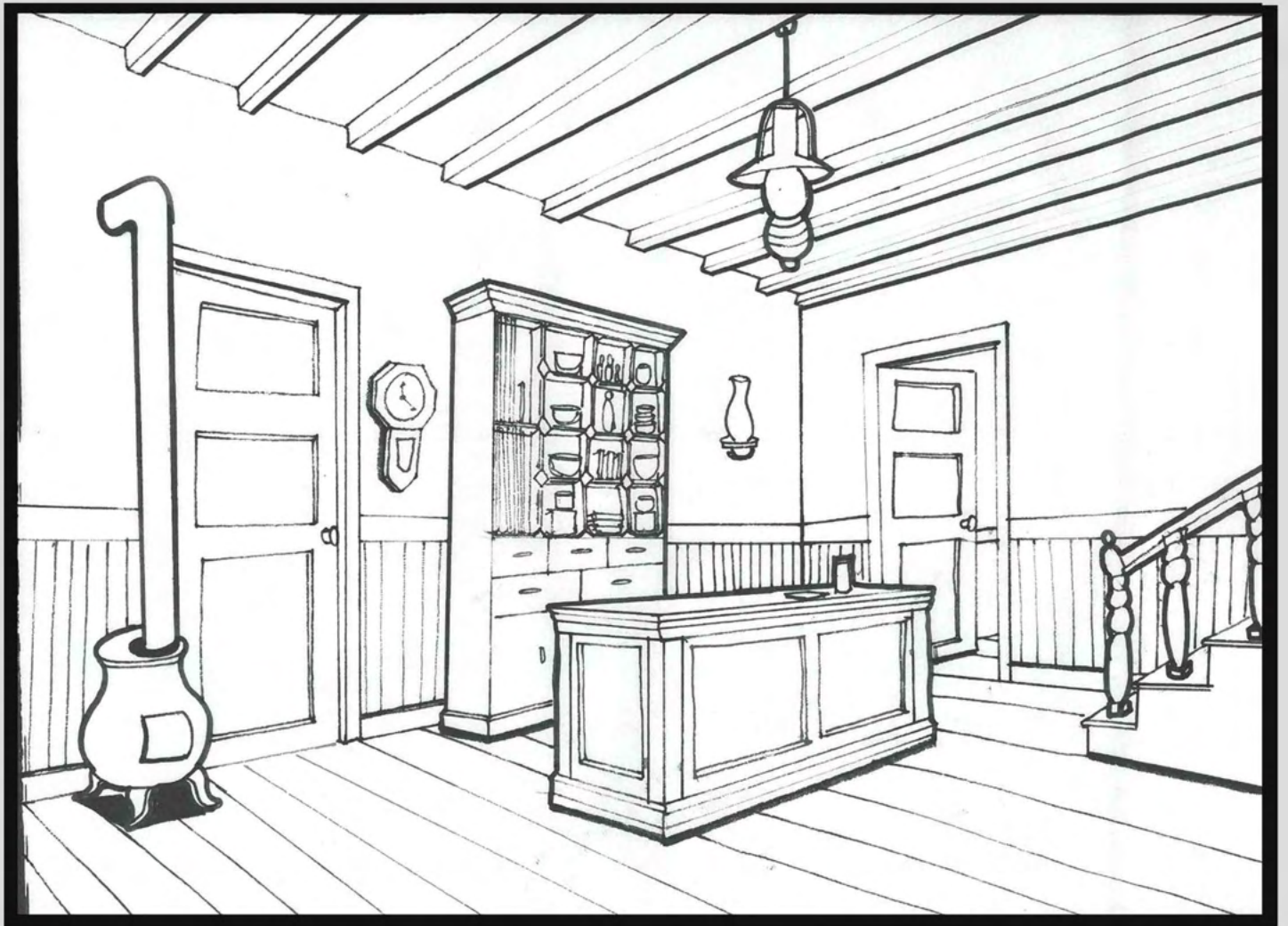
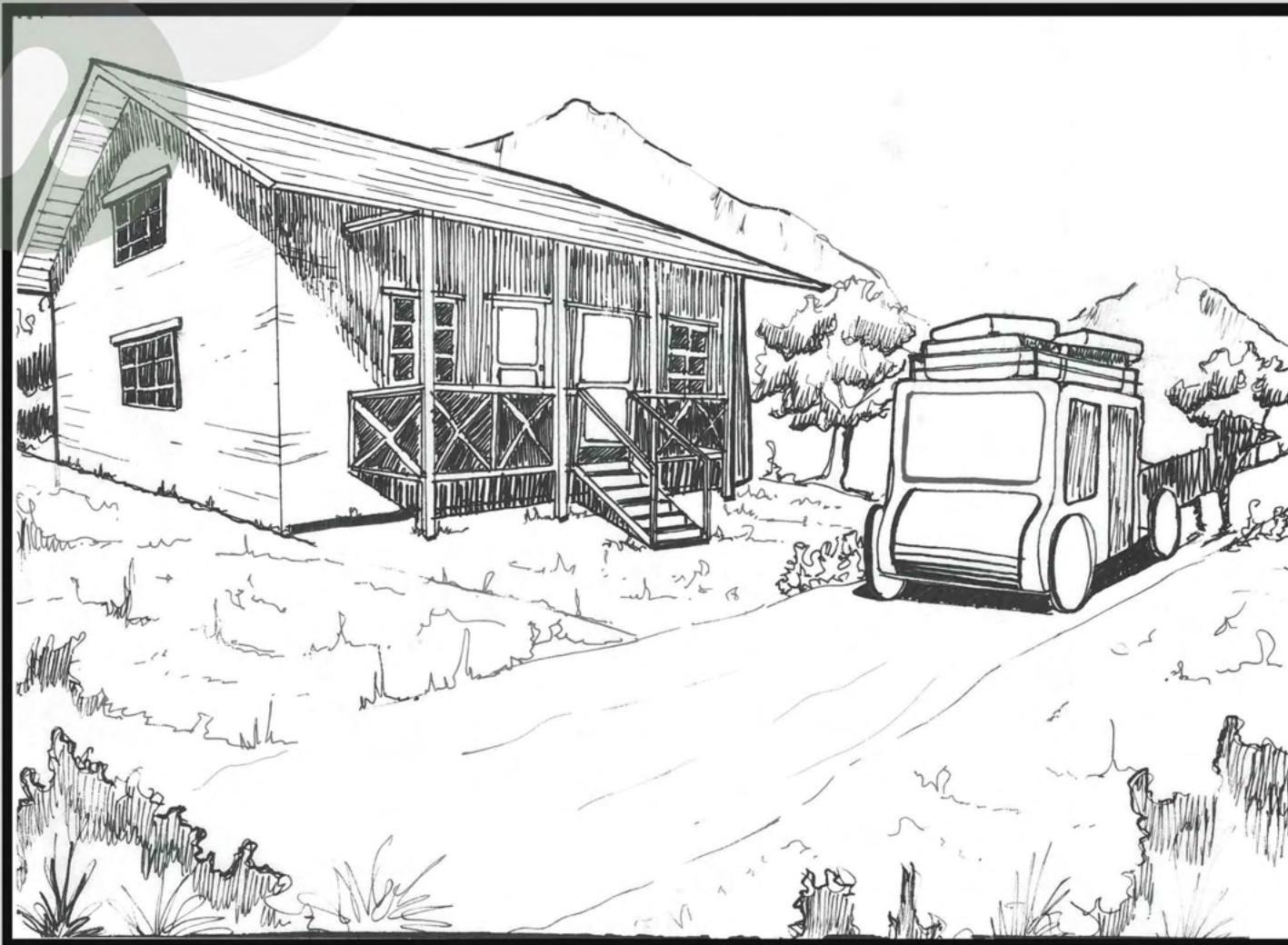
INT. MOTEL ROOM



LIMBO (INT. LA MANSION)

VARIOUS ILLUSTRATIONS

SKETCHUP + PODIUM

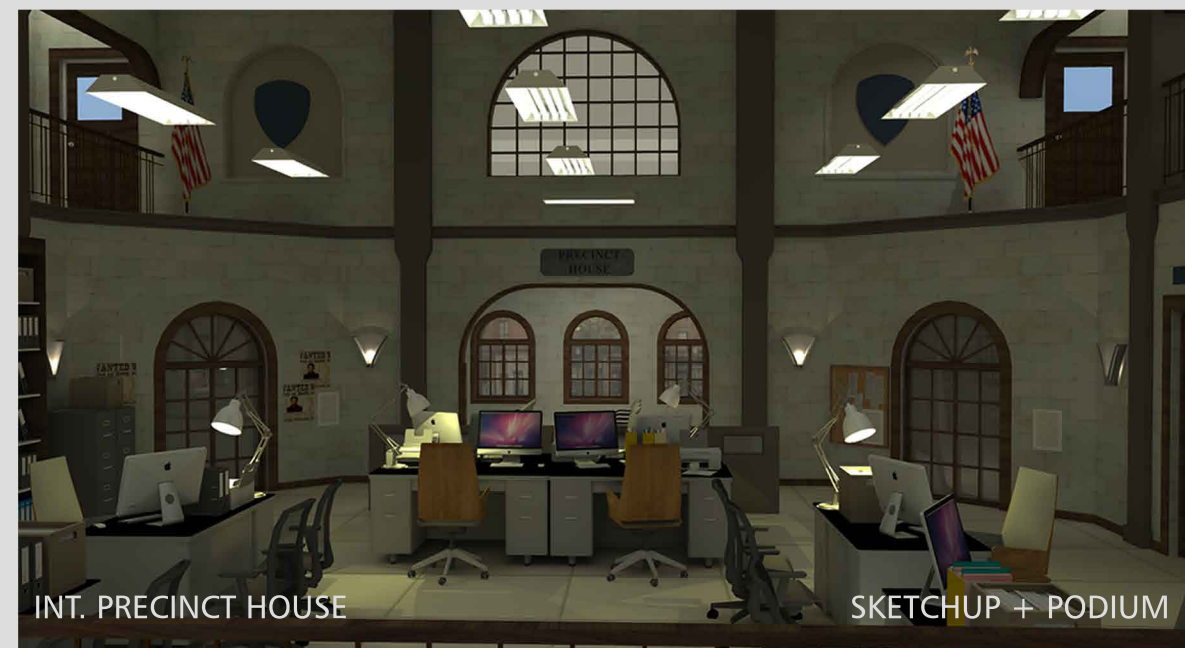


HAND SKETCHING

PRECINCT HOUSE



STYLE SHEET



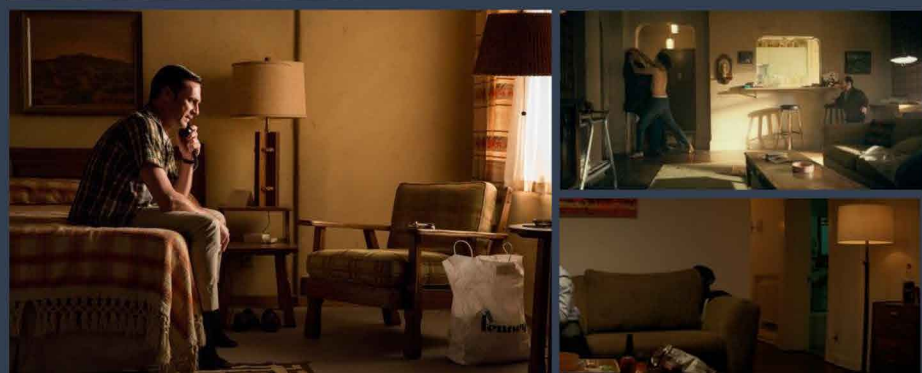
COP BAR



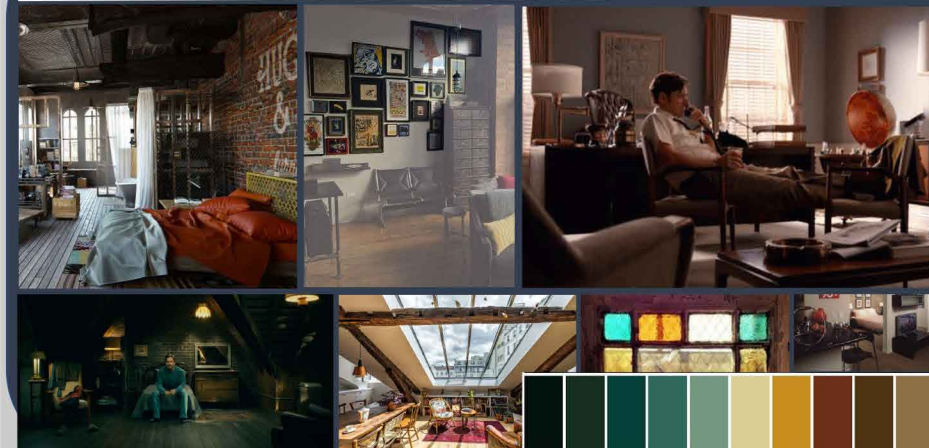
STYLE SHEET



FLINN'S APARTMENT

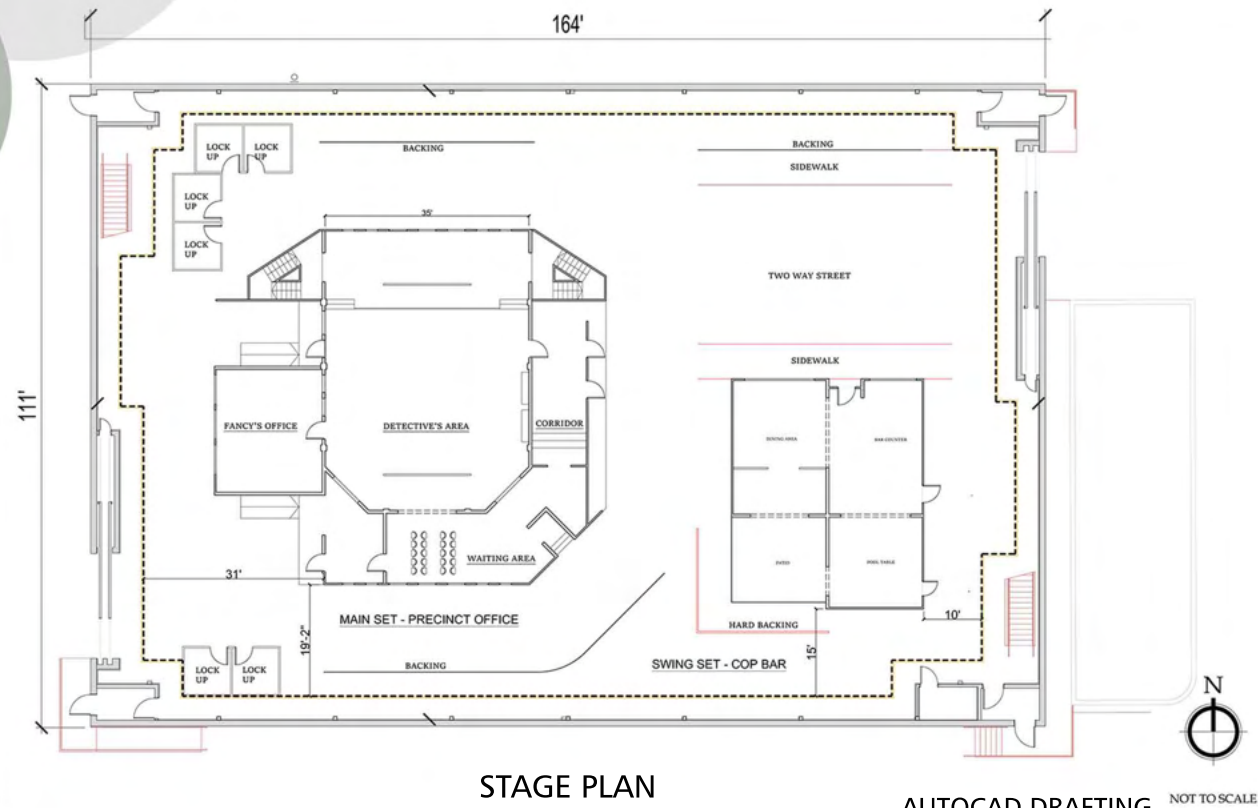


STYLE SHEET



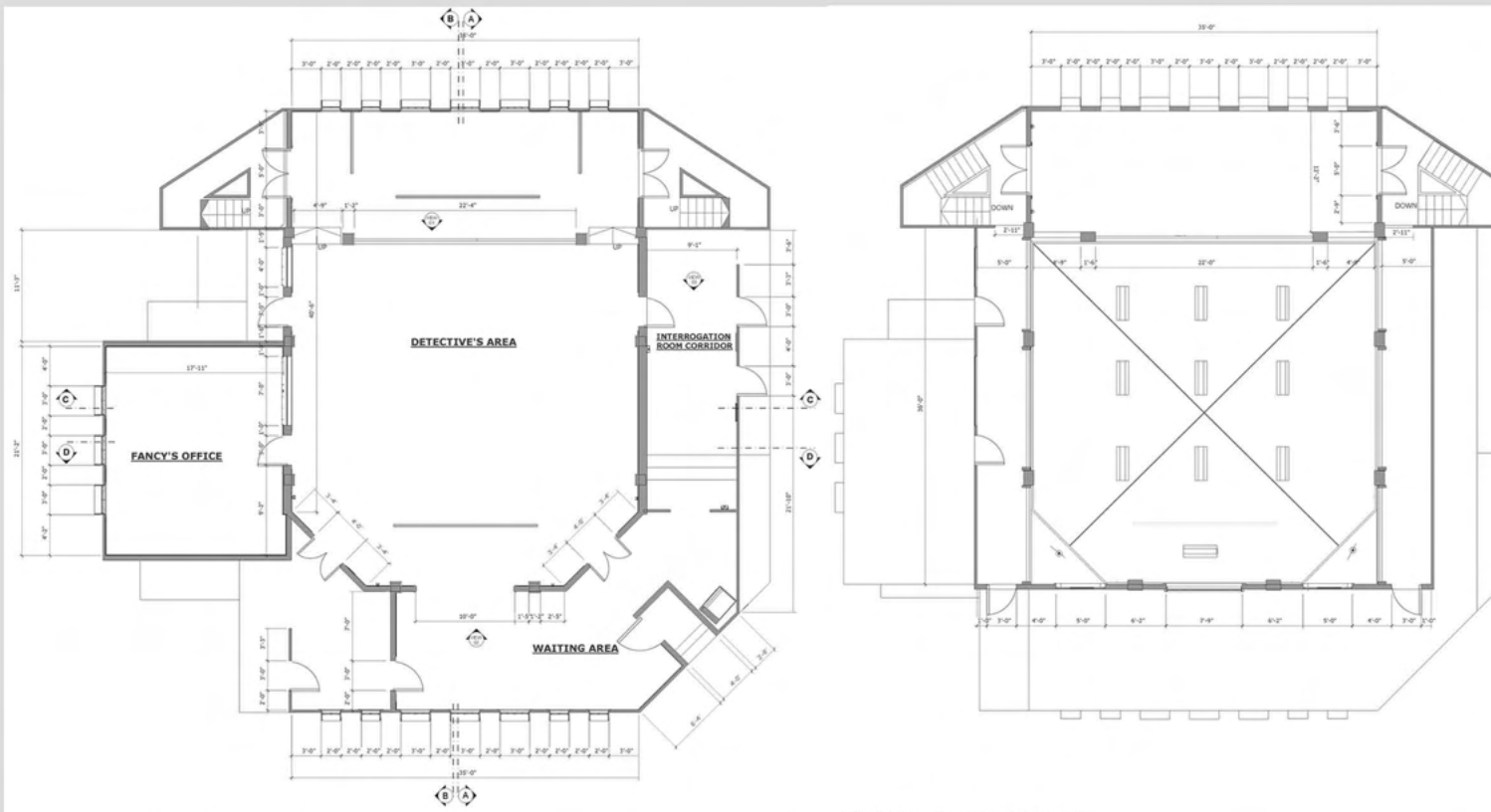
NYPD-BLUE

RE-DESIGN THE PILOT EPISODE



STAGE PLAN

AUTOCAD DRAFTING NOT TO SCALE



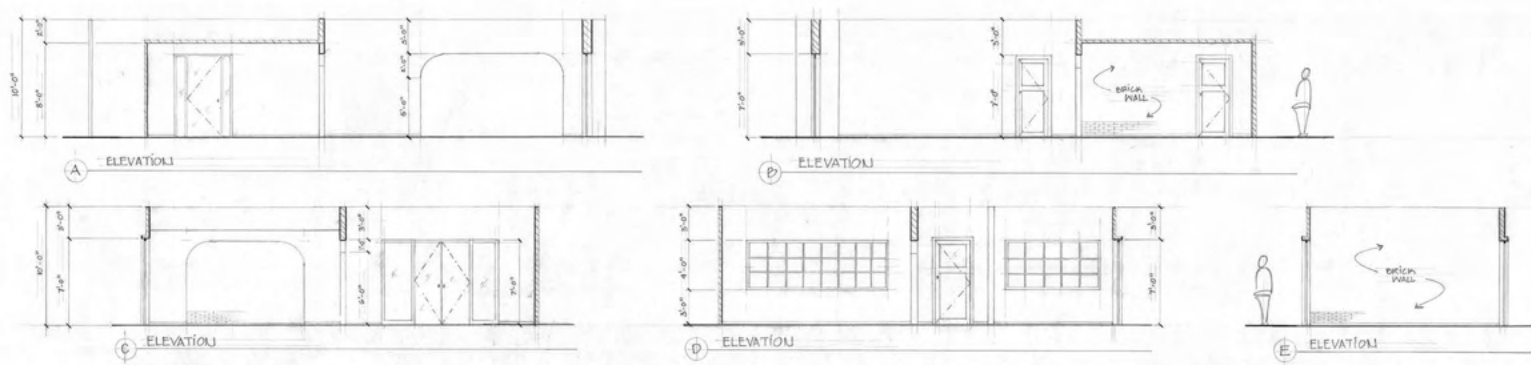
FLOOR PLAN

SCALE 1/4" = 1'-0"

FIRST FLOOR PLAN

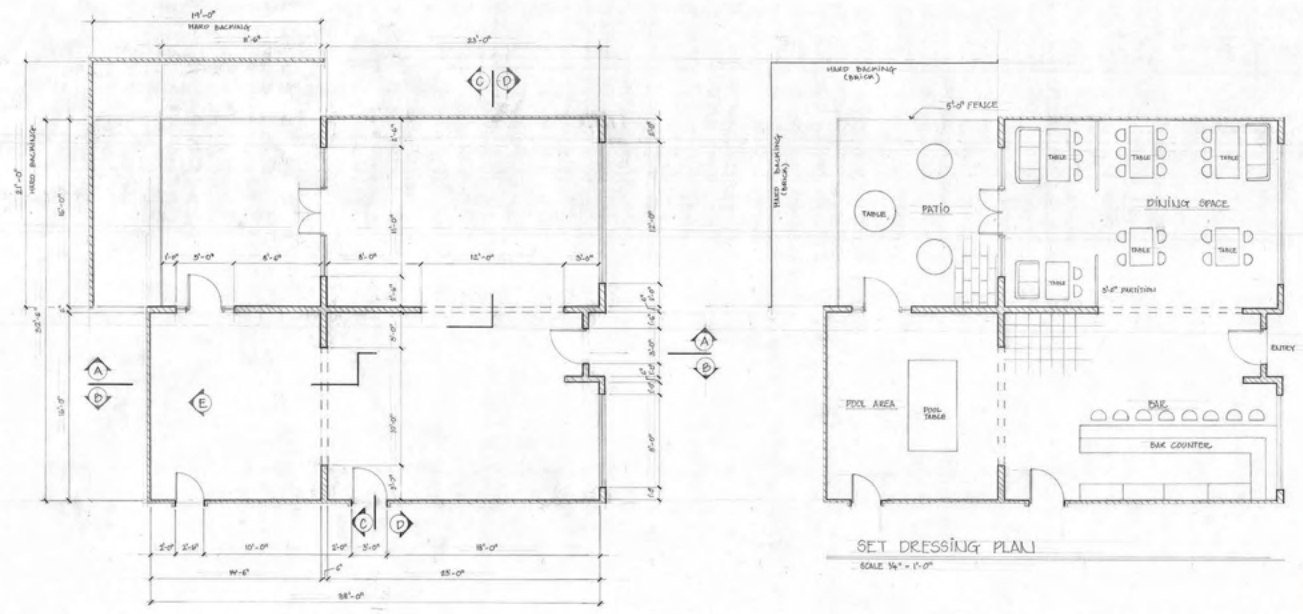
SCALE 1/4" = 1'-0"

SKETCHUP + LAYOUT



NOTE:

- ALL ELEVATIONS ARE ON SCALE 1/8" = 1'-0"
- ALL WALLS UNLESS MENTIONED WILL HAVE WOOD PANEL TILL 7'-0" HEIGHT



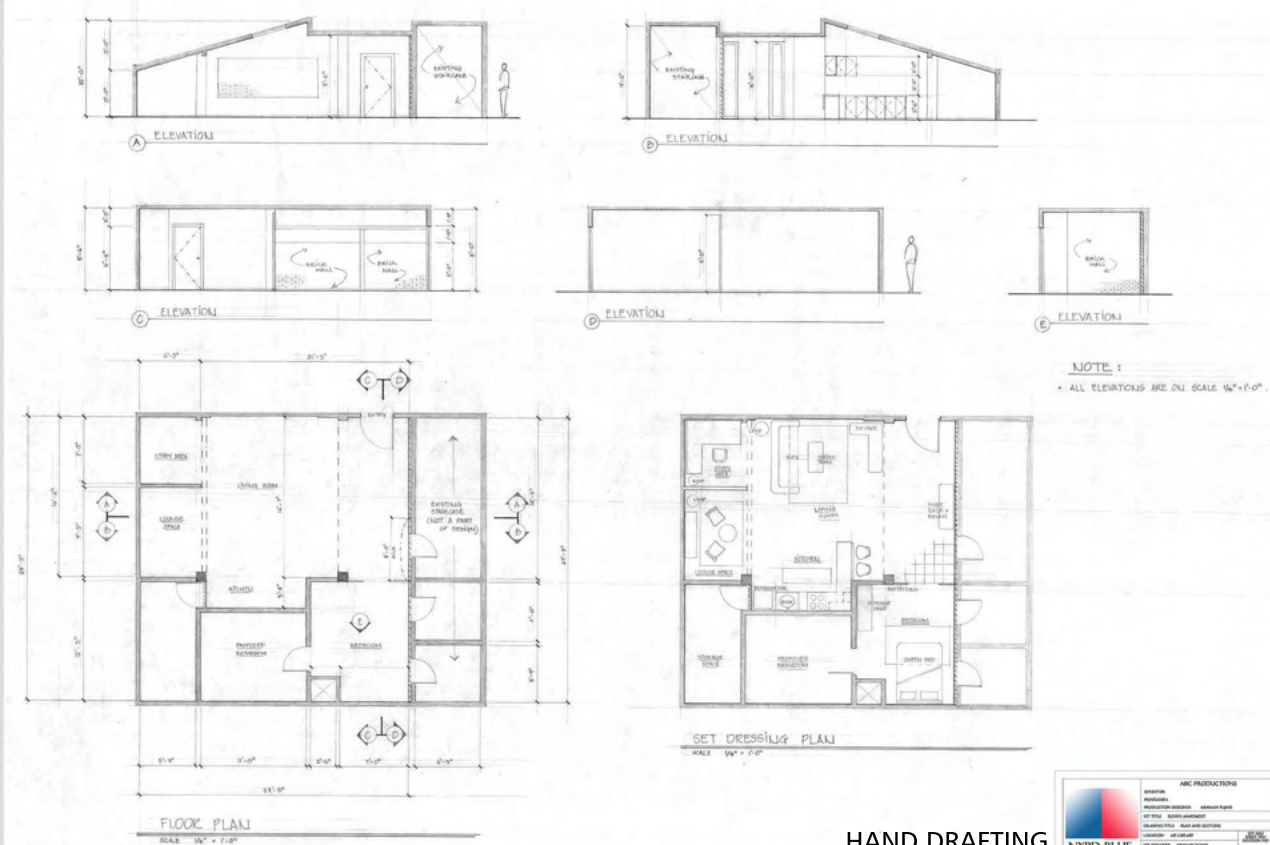
FLOOR PLAN

SCALE 1/8" = 1'-0"

SET DRESSING PLAN

SCALE 1/8" = 1'-0"

HAND DRAFTING



NOTE:

- ALL ELEVATIONS ARE ON SCALE 1/8" = 1'-0"

FLOOR PLAN

SCALE 1/8" = 1'-0"

SET DRESSING PLAN

SCALE 1/8" = 1'-0"

HAND DRAFTING

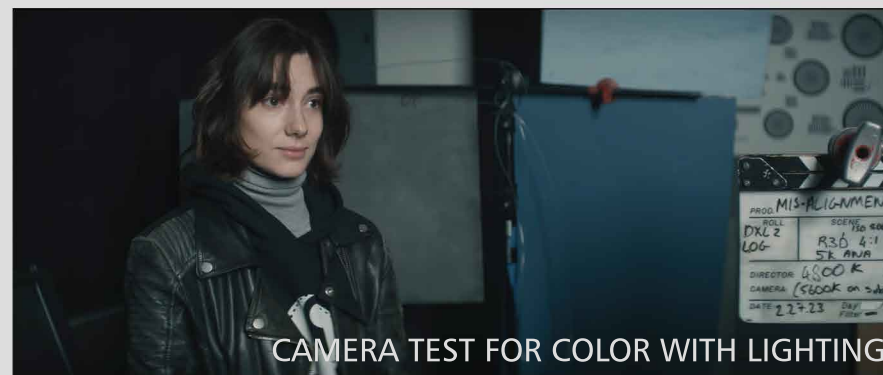


NYPD-BLUE
RE-DESIGN THE PILOT EPISODE



INT. OPERATING ROOM

SKETCHUP + PODIUM



CAMERA TEST FOR COLOR WITH LIGHTING



CUSTOM FLAT FABRICATION

Medical Center



INT. DR. Z'S OFFICE

SKETCHUP + PODIUM



CAMERA TEST FOR COLOR WITH LIGHTING



SCENIC PAINTINT (CONCRETE FINISH)



CAMERA TEST FOR PROPS AND ELEMENTS

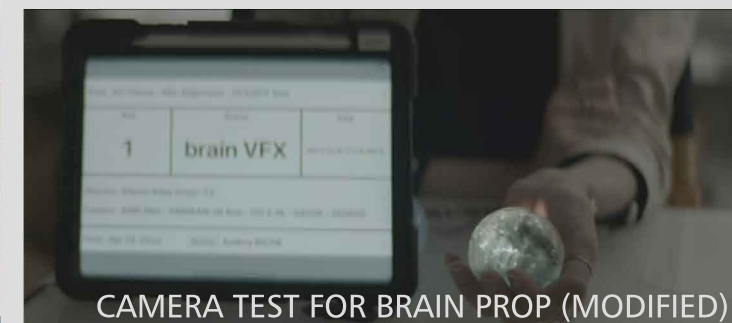


3D PRINT

REFURBISHED TABLE



CAMERA TEST FOR PROPS AND ELEMENTS

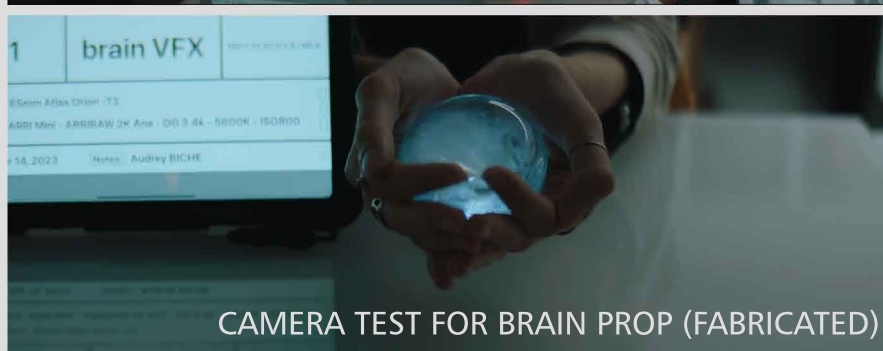


CAMERA TEST FOR BRAIN PROP (MODIFIED)



INT. BASEMENT ROOM

SKETCHUP + PODIUM



CAMERA TEST FOR BRAIN PROP (FABRICATED)



CAMERA TEST FOR GRAPHICS ON TABLE

MIS-ALIGNMENT - WIP

PRODUCTION DESIGN - SHORT



FILM STILLS

MIS-ALIGNMENT

PRODUCTION DESIGN - SHORT

STORY
THROUGH AN ELDERLY WOMAN'S JOURNEY TO REVEAL HER INNER LIFE TO THE WORLD, THIS STORY EXPLORES WHAT IT MEANS TO TRULY SHOW OURSELVES TO THE WORLD AND ATTEMPT TO CONNECT.

PLOT
AN ELDERLY WOMAN, IDA, LIVES ALONE IN A SMALL ROOM WITH MANY WINDOWS SUBSTITUTED BY LARGE, DESOLATE SPACES. AS SHE PUTS FINISHES TO A MINUTELY MODEL OF HER ROOM, MASKED FIGURES BEGIN TO APPEAR OUTSIDE. AS SHE LOOKS AT THEM, ONE OF THEM SPOTS HER. SLOWLY THEY BEGIN TO GATHER AT HER WINDOWS, LOOKING IN AT HER PRIVATE ROOM. HAVING BEEN SEEN, SHE BEGINS TO PAINT HER FACE TO LOOK LIKE THE MASKS OF THE BEINGS THAT NOW COVER EVERY INCH OF HER WINDOWS. AS THE MASKS BEGIN TO CLIMB OUT INTO HER ROOM, SHE REALIZES SHE MUST LEAVE AFTER A FEW MOMENTS OF STUNNED WHICH SHE FEELS HER HOUSE SUDDENLY TURN AND RESUME THEIR DAILY LIVES. THEY MOVE AROUND AS IF SHE ISN'T THERE. STUNNED, SHE LOOKS BACK AT HER PRIVATE SPACE AS THE MASKED CROWD SWIRLS AROUND HER, SEEMINGLY UNMOVED BY HER EMERGENCE. SHE WIPES HER FACE WITH HER HAND, SHAKINGING THE RESIDUE.

CHARACTERS
IDA
IDA (1908) IS A PERSON WHO HAS MANAGED TO LIVE HER LIFE EMOTIONALLY CLOSED OFF TO THE WORLD. SHE KEEPS HER INTERNAL LIFE COMPLETELY TO HERSELF, NOT SHARING IT WITH THE WORLD FOR FEAR OF NOT FITTING IN OR BEING REJECTED. HOWEVER, IN BEING SEEN FOR THE FIRST TIME, SHE IS TO CONFRONT HER FEAR AND COMES TO UNDERSTAND THAT THEY MAY NOT BE FOUNDED AFTER ALL.

THE BEINGS
THE BEINGS ROAM THE SPACE AS ONE, THEY ARE UNIFORM, INDISTINGUISHABLE FROM EACH OTHER, THEY ALL WEAR THE SAME MASK. THE BEINGS ARE AN ENTITY WHICH MOVES IN SYNC.

EMOTIONS
I HOPE TO LEAD THE AUDIENCE THROUGH A SERIES OF EMOTIONS: CURIOSITY, DISCOMFORT AND ULTIMATELY, ACCEPTANCE. WE ALL CARRY WITH US A FEAR, HOWEVER QUIET, THAT IF WE ARE TO SHARE OUR DEEPEST SEVES WITH THE WORLD IT MAY DESTROY US. WILL WE BE REJECTED? DO WE HAVE TO LOSE OUR IDENTITY TO FIT IN? I HOPE THAT THE FILM MIGHT PROVIDE A PLATFORM FOR CONVERSATIONS AND INSPECTION. THE IDEAS I WOULD LIKE THE AUDIENCE TO CONSIDER ARE IDENTITY AND THE NOTION OF INDIVIDUALITY.

CHARACTERS
IDA
IDA (1908) IS A PERSON WHO HAS MANAGED TO LIVE HER LIFE EMOTIONALLY CLOSED OFF TO THE WORLD. SHE KEEPS HER INTERNAL LIFE COMPLETELY TO HERSELF, NOT SHARING IT WITH THE WORLD FOR FEAR OF NOT FITTING IN OR BEING REJECTED. HOWEVER, IN BEING SEEN FOR THE FIRST TIME, SHE IS TO CONFRONT HER FEAR AND COMES TO UNDERSTAND THAT THEY MAY NOT BE FOUNDED AFTER ALL.

THE BEINGS
THE BEINGS ROAM THE SPACE AS ONE, THEY ARE UNIFORM, INDISTINGUISHABLE FROM EACH OTHER, THEY ALL WEAR THE SAME MASK. THE BEINGS ARE AN ENTITY WHICH MOVES IN SYNC.

EMOTIONS
I HOPE TO LEAD THE AUDIENCE THROUGH A SERIES OF EMOTIONS: CURIOSITY, DISCOMFORT AND ULTIMATELY, ACCEPTANCE. WE ALL CARRY WITH US A FEAR, HOWEVER QUIET, THAT IF WE ARE TO SHARE OUR DEEPEST SEVES WITH THE WORLD IT MAY DESTROY US. WILL WE BE REJECTED? DO WE HAVE TO LOSE OUR IDENTITY TO FIT IN? I HOPE THAT THE FILM MIGHT PROVIDE A PLATFORM FOR CONVERSATIONS AND INSPECTION. THE IDEAS I WOULD LIKE THE AUDIENCE TO CONSIDER ARE IDENTITY AND THE NOTION OF INDIVIDUALITY.

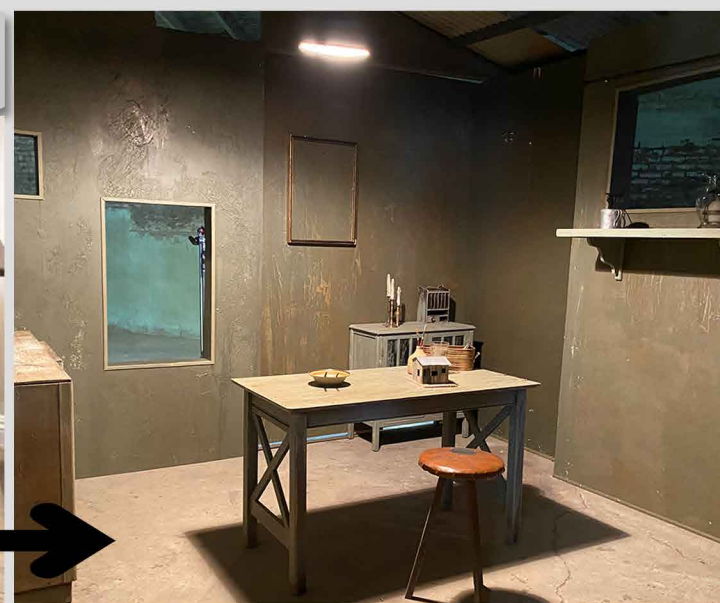
COLOR
STARK, DESOLATE, BLEAK, RESTRAINED, MUTED COLOR PALETTE.
PALE GREENS AND BLUES. SKIN TONE WILL BE THE WARMEST ELEMENT IN FRAME.

ART BUDGET _ VE Audrey			
SR. Number	Particulars	Quantity	Expected Cost
1	Lumber 1x3	48	120
2	Lumber 1x4	10	60
3	1/4 - 4ft x 8ft - Lauan Plywood	8	184
4	Wood Glue	5	20
5	Paint - Wood Stain	2	13
6	Paint - Exterior Base Coat	1 Gallon	20
7	Paint - Interior	2 Gallons	70
8	Paint - Moulding and Furniture	1 Gallon	30
9	Wallpaper	1 Roll	60
10	Location Tape	1 Roll	25
	Paint Supplies - Rollers, Liners, Drop Plastic, Paint Brushes, Rags		50
	Aging Supplies - Raw Umber, Spray Bottles, Dust, Glue, stain Paint and small brushes		80
12	Mouldings		40
14	Corrugated sheets for the Roof	10	220
15	Furniture - Desk, Dresser and TBD		200
16	Model Materials		80
17	Art Truck	4 Days	400
	Miscellaneous		50
		Total	1722
	Meals 10/Person	5 days x 5 Persons	250
		Total	1972

BEHIND THE SCENE PICTURES



ART DEPARTMENT WORKFLOW FOR VE WITH AUDREY						
SUN	MON	TUE	WED	THURS	FRI	SAT
	10 12:00 - 4:00 ECO SET TAGGING (FLAT, LUMBER, PAINT, PROPS)	11 ORDER LUMBER FOR THURSDAY PICKUP	12 PREPS	13 10:00 - 5:00 PICKUP FROM ECOSSET LUMBER PICKUP PAINT SUPPLIES PICKUP ROOF MATERIALS PICKUP WALLPAPER AND AGING SUPPLIES	14 9:00 - 5:00 CONSTRUCT THE FLATS NEEDED BASE COAT THE WALLS FOR INTERIORS	15 9:00 - 5:00 CONSTRUCT THE REMAINING FLATS PAINT THE WALLS CUT PIECES FOR EXTERIOR
16 WORK AT HOME - MAYBE ON THE MODEL AND PROPS	17 12:00 - 6:00 FINISH PAINTING AND START SCENIC EXTERIOR CONSTRUCTION TRUSS CONSTRUCTION WALLPAPER THE INTERIOR FLATS	18 12:00 - 6:00 AGE ALL THE FLATS, FINISH THE ROOF AND WORK ON THE DOOR AND MOULDINGS	19 1:00 - 6:00 FINISH MODEL PICKUP PROPS FINISH AGING EVERYTHING	20 9:00 - 6:00 PICKUP PROPS AND FURNITURE PAINT AND AGE FURNITURE IF NEEDED PICKUP SUPPLIES FOR SETUP LOAD FLATS	21 TBD SET UP DAY	22 SHOOT
23 SHOOT AND WRAP	24 12:00 - 5:00 WRAP AT AFI					



BUILDING THE WALL ELEVATION



REPLIQUE - PRE-PRODUCTION
PRODUCTION DESIGN - SHORT



PRE-VIS



FILM STILL



FILM STILL



PRE-VIS



FILM STILL



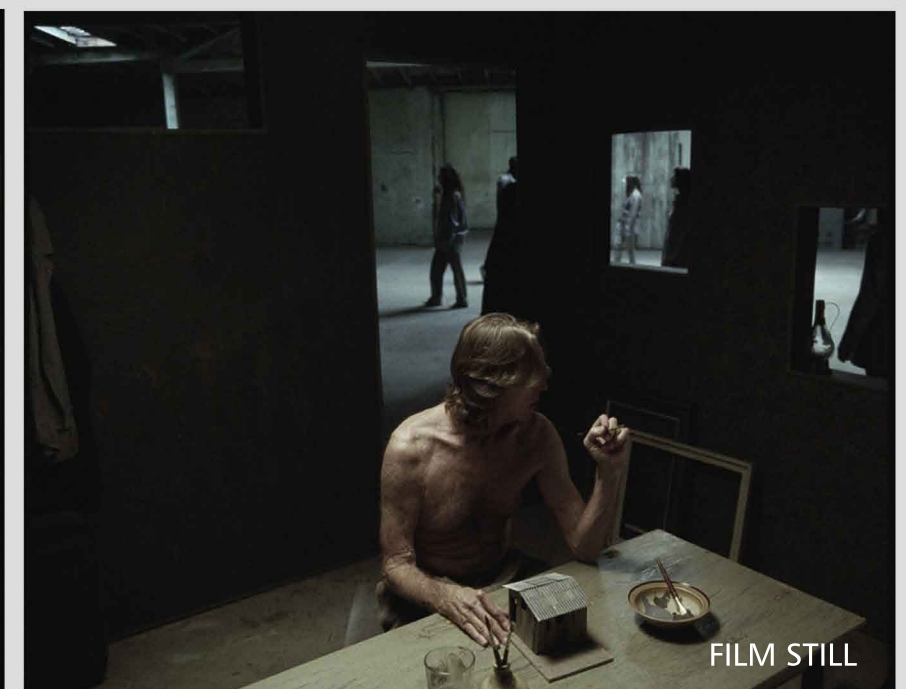
FILM STILL



PRE-VIS



FILM STILL



FILM STILL

REPLIQUE

PRODUCTION DESIGN - SHORT